

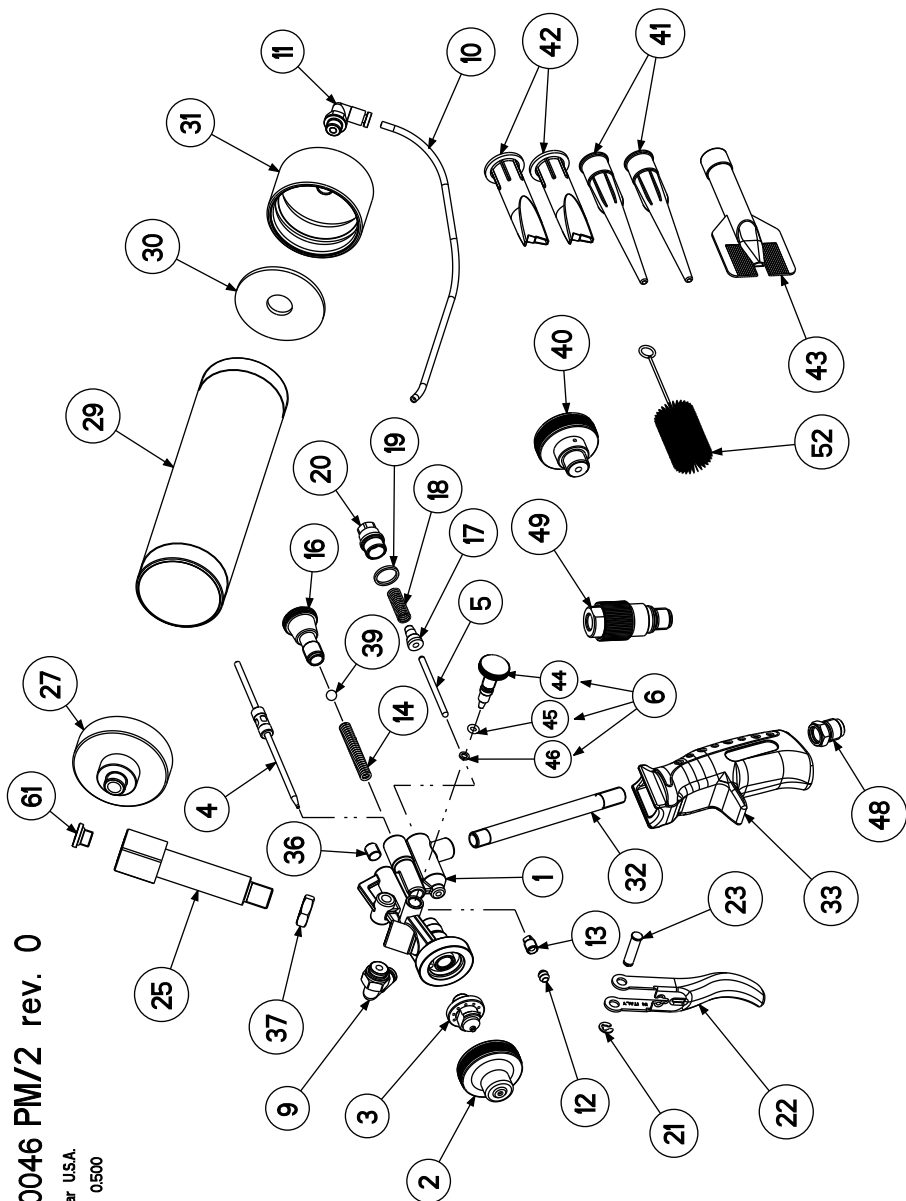
USER'S MANUAL

PM 2

COATING GUN

OPERATING INSTRUCTIONS FOR SPRAY GUN MODEL PM/2

1. PRODUCT IDENTIFICATION



1050046 PM/2 rev. 0

Chemical U.S.A.
SCALE 0500

PM/2 SEAM SEALER GUN PARTS LIST

DRAWING NUMBER	DESCRIPTION	PRODUCT NUMBER
1	GUN BODY	PM/2.01
2	SPRAYING CAP	PM/2.02
3	NOZZLE	PM/2.03
4	NEEDLE	PM/2.04
5	TRIGGER PIN	PM/2.05
6	AIR CONTROL KNOB	PM/2.06
8	BASE NUT L-FITTING	PM/2.08
9	L-FITTING FIXED	PM/2.09
10	RILSAN AIR HOSE	PM/2.10
11	REVOLVING L-FITTING	PM/2.11
12	NEEDLE PACKING	PM/2.12
13	NEEDLE PACKING ADJUSTMENT	PM/2.13
14	NEEDLE SPRING	PM/2.14
16	PRODUCT CONTROL KNOB	PM/2.16
17	PLASTIC GASKET	PM/2.17
18	TRIGGER SPRING	PM/2.18
19	GASKET FOR TRIGGER	PM/2.19
20	TRIGGER RETAINING NUT	PM/2.20
21	CIR-CLIP	PM/2.21
22	TRIGGER	PM/2.22
23	TRIGGER PIN	PM/2.23
25	CONNECTOR	PM/2.25
27	FRONT CAP	PM/2.27
28	GASKET	PM/2.28
29	TUBE	PM/2.29
30	GASKET	PM/2.30
31	REAR CAP	PM/2.31
32	AIR INTAKE TUBE	PM/2.32
33	HANDGRIP	PM/2.33
36	ALLEN SCREW	PM/2.36
37	CONNECTOR NUT	PM/2.37
39	BALL BEARING	PM/2.39
40	EXTRUSION CAP	PM/2.40
41	STANDARD SEAM SEALER TIP	PM001
42	DOORSKIN TIP FOR SEAM SEALER	PM002
43	SPECIAL EXTRUSION TIP	PM003
49	AIR REGULATOR (OPTIONAL)	BS23
48	AIRFLOW CONNECTOR	PM/2.48
52	CLEANING TOOL	PM/2.52
61	CONNECTOR PLUG	PM/2.61
	REFURBISH KIT SEAM SEALER GUN CONTENTS: 1 each of PM/2.06,PM/2.12,PM/2.17,PM/2.19 2 each of PM/2.28	PM/2.KIT
	EXTRUSION KIT CONTENTS: 1 each of PM/2.10,PM/2.28,PM/2.40,PM/2.52. 2 each of PM001, PM002.	PM/2.EXTRUSION

2. GENERAL WARNING

Before using the spray gun, read the operating instructions thoroughly

Before carrying out any type of maintenance or repair always disconnect the gun from the air supply.

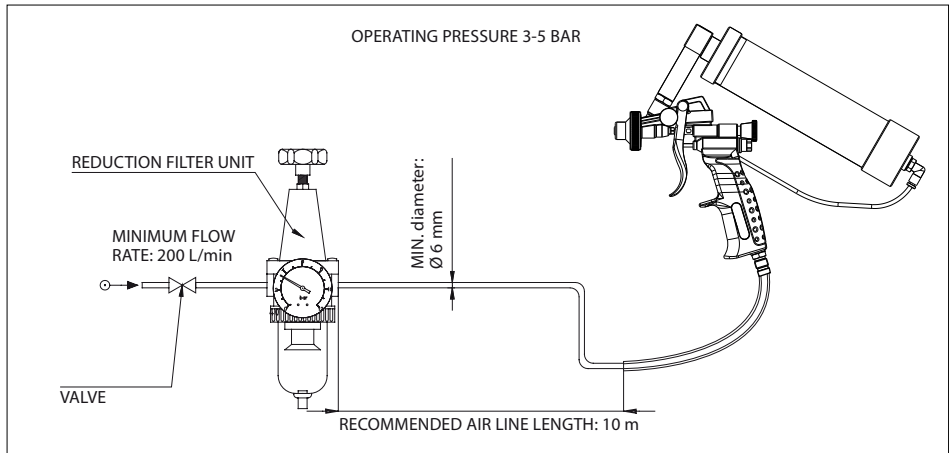
When selecting, and before using, the product to be sprayed with the gun, verify that it is in fact compatible with the work environment and the individual safety devices employed, according to the product safety sheet.

Never point the spray gun at yourself, other people or animals, or in any case at anything else other than the object to be treated.

While operating the spray gun, wear the appropriate safety garments and devices (gloves, goggles, masks, overalls, etc.) according to the instructions listed in the product safety sheet. The use of goggles is always recommended.

Hang the gun on the special hook when it is not being used so as to guarantee its vertical position.

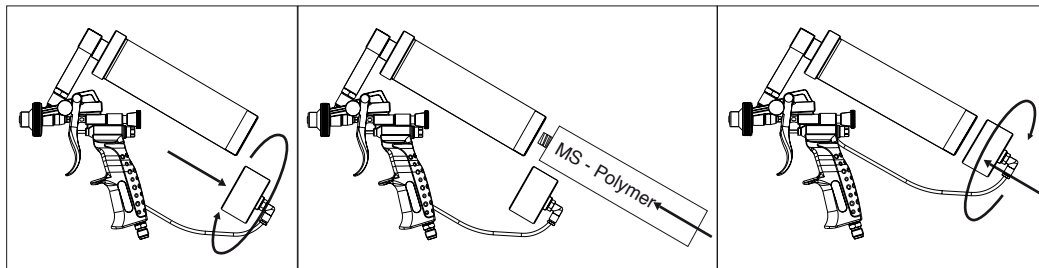
3. STARTING THE SPRAY GUN



Connect the gun to a compressed air supply. We recommend the use of an inline filter/reducer to ensure a clean air supply and a supply tap to enable product flow to be shut off.

- Approximate air consumption of the spray gun: 200-300 liters per minute (55-80 gallons per minute or between 7 and 11 cubic feet per minute).
- Working pressure: 3-5 BAR (45-60 psi)
- Maximum working pressure: 8 BAR (150 psi)
- Recommended length of supply hose: 10 meters (30 feet)
- Minimum interior diameter of air hose: 6 mm (1/4 inch)
- Air supply connection: male 1/4 gas

Inserting the cartridge Unscrew the Rear Cap (PM/2.31) counterclockwise while holding the Tube (PM/2.29) stationary. The Revolving L-Fitting (PM/2.11) will allow the Rear Cap to be removed without disconnecting the Rilsan Air Hose (PM/2.10).

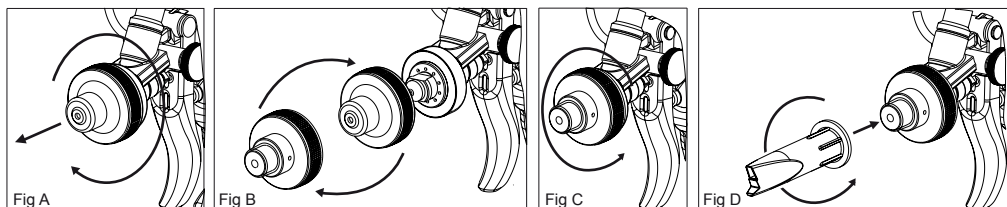


- Open the cartridge, following the steps below.
- Always check the expiration dates on the cartridge. The product must be fresh.
- If the cartridge is of the type with aluminium foil covering the end of it, remove the foil, remove the silica packet and any glue residue.
- Cut the tip off the cartridge.
- Be sure to push on the plunger in the cartridge until it moves slightly.
- Never place a damaged cartridge in the gun. Take particular care to check aluminium cartridges for dents. The plunger will not pass through a dented cartridge.

Place the cartridge into the tube but do not screw it into place. The Front Cap (PM/2.27) is not threaded to allow the use of both plastic and aluminium cartridges. Tighten the Rear Cap clockwise to ensure a tight fit between the cartridge and the gasket in the Rear Cap.

To operate, point the gun at the object to be treated and press the trigger. Keep the gun between 10cm to 30cm (4 and 12 inches) away from the surface depending on what result you wish to obtain. When you have finished spraying, disconnect the air supply and hang the gun on the Fastening Hook to store it.

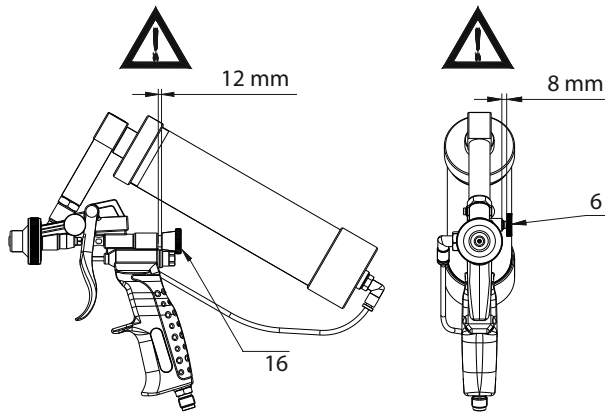
Using the Extrusion Cap and the Plastic Tips



- Fig A. Unscrew the Spray Cap (PM/2.02) counterclockwise.
- Fig B. Replace the Spray Cap with the Extrusion Cap (PM/2.40).
- Fig C. Screw the Extrusion Cap onto the body of the gun clockwise.
- Fig D. Select the desired Seam Sealer tip and screw it onto the Extrusion Cap clockwise.

Note: While using the Extrusion Cap and Seam Sealer tips, the Air Control Knob (PM/2.06) must be closed.

4. ADJUSTING THE SPRAY GUN



Adjusting the product atomization: Turn the Air Control Knob (PM/2.06) clockwise to close the air passage gradually. This will reduce the atomization and make the texture rougher. Turn the Air Control Knob anti-clockwise to increase the atomization and spray a smoother texture.

Warning: Be careful not to unscrew the Air Control Knob (PM/2.06) or the Product Control Knob (PM/2.16) too far. If these knobs are loosened too much there is a risk that the pressure will cause them to be forcibly ejected from the gun. See diagram.

Adjusting product quantity: Turn the Product Control Knob (PM/2.16) clockwise to gradually increase product flow. Turn anti-clockwise to increase the flow.

Combination adjustments: By adjusting both the Air and Product control knobs in combination you can achieve a variety of textures and widths of the product beads.

Adjusting total incoming air flow, with optional air flow regulator nr.49: If you have the optional Air Flow Regulator (BS23) attached you can control the incoming air flow by turning the Regulator clockwise to increase the flow and anti-clockwise to decrease the flow.

NB: The width of the product bead depends less upon adjusting the control knobs and more upon the distance of the gun from the surface you are spraying.

5. TROUBLESHOOTING

PROBLEM	CAUSES	CORRECTIVE ACTION
The gun does not spray when the trigger is depressed	No air or product supply	Ensure that the Air and Product Control Knobs are open
Uneven spraying	Supply lines, spray cap or nozzle dirty or clogged	Clean all supply lines and the spray cap and nozzle
Hardened product inside gun	Product left in gun too long Nozzle or needle damaged	Clean the spray gun Replace damaged parts

6. CLEANING

- ° Disconnect the spray gun from the air supply.
- ° Remove the cartridge from the tube by unscrewing the Rear Cap.
- ° Turn the gun upside down and pour an adequate amount of a suitable solvent into the tube.
- ° Let the solvent sit in the tube for a while to let it loosen up any adhering product.
- ° Reconnect the Rear Cap to the gun and reconnect the gun to the air supply.
- ° Spray the cleaning solvent into a suitable container and repeat until the solvent spray is clear. Dispose of the used cleaning solvent according to local health regulations.
- ° Make sure the Air Control Knob (PM/2.16) is completely closed to avoid atomizing the cleaning solvent. Atomized cleaning solvent is both an air pollutant and a fire hazard.
- ° In the event of product leaking out of the Needle Packing Adjustment area (PM/2.12 & 13) clean the area immediately. Adjust the Needle Packing Adjustment screw (PM/2.13) clockwise to reseal the gun. Make sure the needle can still move.

7. PAUSING DURING WORK

With a cartridge correctly installed the gun is hermetically sealed. Work can be suspended for a significant period of time and the gun will not be harmed. If the cartridge is removed, clean the gun immediately as directed above. Do not leave polyurethane cartridges in the gun at all. Remove the cartridge IMMEDIATELY and clean as instructed above. Polyurethane hardens extremely rapidly and will clog the gun very quickly. Most other MS polymer sealant product cartridges can be left inside the gun for 8-10 days without any adverse effects.

After each use, and before storing, make sure that you close all air inlets, This will ensure that the gun remains hermetically sealed during storage.

